



ΚΥΠΡΙΑΚΟ  
ΕΜΠΟΡΙΚΟ ΚΑΙ  
ΒΙΟΜΗΧΑΝΙΚΟ  
ΕΠΙΜΕΛΗΤΗΡΙΟ

Λευκωσία 6.11.2015

Προς: Όλους τους Ενδιαφερόμενους

Κυρίες / Κύριοι,

Η εταιρεία BERTSCH ENERGY ενδιαφέρεται για συνεργασία με την Κύπρο. Εσωκλείεται σχετικό έντυπο της εταιρείας με τις δραστηριότητες της.

Οι ενδιαφερόμενοι παρακαλούνται όπως επικοινωνήσουν απευθείας με την εταιρεία.

Με εκτίμηση

Χρίστος Πετσίδης  
Διευθυντής Υπηρεσιών και Εμπορίου

# BERTSCHenergy

Boiler and Energy Technology  
Process Equipment

Since its founding in 1925, the company BERTSCH operates successfully in the field of boiler plants and process equipment. Today BERTSCH is an internationally recognized partner for design and construction of power plants. Starting with engineering, dealing with procurement, installation, commissioning and worldwide service.



## Process Heat Recovery Systems and Pressure Equipment

- » Heat recovery systems & pressure equipment for the chemical and petrochemical industry
- » Process heat recovery units, process gas coolers
- » Steam drums, steam accumulators, columns
- » All varieties of thick-walled pressure equipment
- » Process gas stream: to 400.000 Nm<sup>3</sup>/h
- » Steam parameters: to 165t/h, to 150 bar, to 650°C



## Combined-Cycle / Cogeneration HRSG

- » Waste heat utilisation after gas turbines
- » Vertical or horizontal design
- » Secondary firing, fresh air operation mode, bypass systems
- » Gas turbine power up to 100 MWeI
- » Steam parameters: to 250 t/h, to 150 bar, to 560°C



## Industrial Waste Heat Recovery

- » Waste heat utilisation from flue gas for process steam
- » Turnkey boiler plants
- » Boiler systems behind combustion chambers, rotary furnaces, fluidized bed furnaces
- » Exhaust gas quantity: to 350.000 Nm<sup>3</sup>/h
- » Steam parameters: to 150t/h, to 120 bar, to 540°C



## Solid Fuel Power Plants

- » Steam and power from solid fuels
- » Boiler plant for biomass or solid fuels with grate firing
- » Boiler plant with fluidized bed for biomass or solid fuels
- » Boiler plant with grate firing for coal
- » Steam parameters: 15-100 t/h, 40-130 bar, to 525°C

**BERTSCH**

BERTSCHenergy | Bertsch Energy GmbH & Co. KG | T +43 5552 61 35-0 | F +43 5552 663 59  
Herrengasse 23 | 6700 Bludenz | Österreich | bertschgroup@bertsch.at | www.bertsch.at

**BERTSCH**group



**BERTSCH**

**Tradition, Quality, Know-how since 1925**

Provider of boiler and energy technology, systems engineering and food technology



**BERTSCH**group



**BERTSCH**energy



**BERTSCH**foodtec



**BERTSCH**laska

**BERTSCH**

TRADITION, QUALITY, KNOW-HOW. SINCE 1925



The name of BERTSCHlaska for several decades now has been standing for individual complete solutions for the meat processing industry. Our product line encompasses the delivery of individual machines as well as the planning and delivery of complete facilities including assembly, commissioning, training and technological advice.



## Slaughtering, Cutting, Hygiene, Refrigeration technology

- » Slaughtering of cattle and sheep
- » Facilities for processing by-products
- » Tubular track systems and conveyor systems
- » Cutting and deboning lines
- » Defrosting equipment
- » Refrigeration systems, plate freezers, flash cooling
- » Personal and work area hygiene



## Sausage Production

- » Frozen meat cutters, mincers
- » Mixing and standardization systems
- » Cutters and emulsifiers
- » Filling and clipping machines
- » Brine injectors and massaging systems
- » Portioning systems
- » Production lines



## Thermal Treatment

- » Smoking and cooking systems
- » Cooking and intensive cooling systems
- » Continuous systems
- » Roasting and baking systems
- » Cold smoke and sweating systems
- » Climatic maturation systems
- » Cooking kettles



## Packaging and Warehouse Logistics

- » Chamber and belt vacuum packaging machines
- » Tray-sealing machines
- » Thermoforming packaging systems
- » Transportation systems
- » Gravity storages
- » Fully automatic shelf operating systems
- » Automatic crate cleaning equipment

**RTSCH**laska



**BERTSCH**  
Tradition, Quality, Know-how since 1925  
Provider of boiler and energy technology, systems engineering and food technology



**BERTSCH**group



**BERTSCH**energy



**BERTSCH**foodtec



**BERTSCH**laska

**BERTSCH**

TRADITION, QUALITY, KNOW-HOW. SINCE 1925

# BERTSCHfoodtec

Leading technology  
for the food industry

Since its foundation in the year 1925, BERTSCH has been an important supplier for processing equipment to the dairy industry. Today BERTSCH is an international well known partner for the food industry in respect of plant construction and engineering. Our service includes consulting, planning, supplying, commissioning and start-up on a global basis.



## Dairy Plants

- » Plant concepts for all products to be produced
- » Planning | supplying | installation | service
- » Units for production of: drinking milk, yoghurt, butter, cream, desserts, kashk, dough etc.
- » Most modern systems for pasteurisation, heating, stirring, mixing, blending, cooling, homogenisation and cleaning
- » Tailor-made concepts for automation



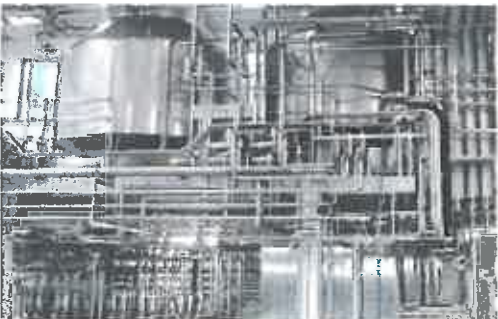
## Cheese Plants

- » Complete plant- / processing concepts
- » Production lines for hard- and semi hard cheese
- » Double-O-cheese vat with recipe control
- » Press-Systems for different types of cheese
- » Brining systems, including automated loading / unloading
- » Units for salt dissolving, cooling and de-germinating
- » Equipment for cheese ripening / treatment of cheese



## CIP-Cleaning and Filtration

- » CIP-units with measurement and control technology
- » SPS-control, freely programmable
- » CIP as multi-circle system including storage tanks for cleaning solvents
- » Automatic dosing of cleaning detergents
- » Microfiltration | ultrafiltration | reverse osmosis
- » Fully automated process



## Commissioning and Service

- » Well trained and experienced commissioning personnel
- » International service and maintenance
- » Spare part service
- » Technological assistance / support (optional)
- » Training for operation personnel
- » Maintenance for control systems via Ethernet



**BERTSCH**foodtec



**BERTSCH**

**Tradition, Quality, Know-how since 1925**

Provider of boiler and energy technology, systems engineering and food technology



**BERTSCH**group



**BERTSCH**energy



**BERTSCH**foodtec



**BERTSCH**laska

**BERTSCH**

TRADITION, QUALITY, KNOW-HOW. SINCE 1925