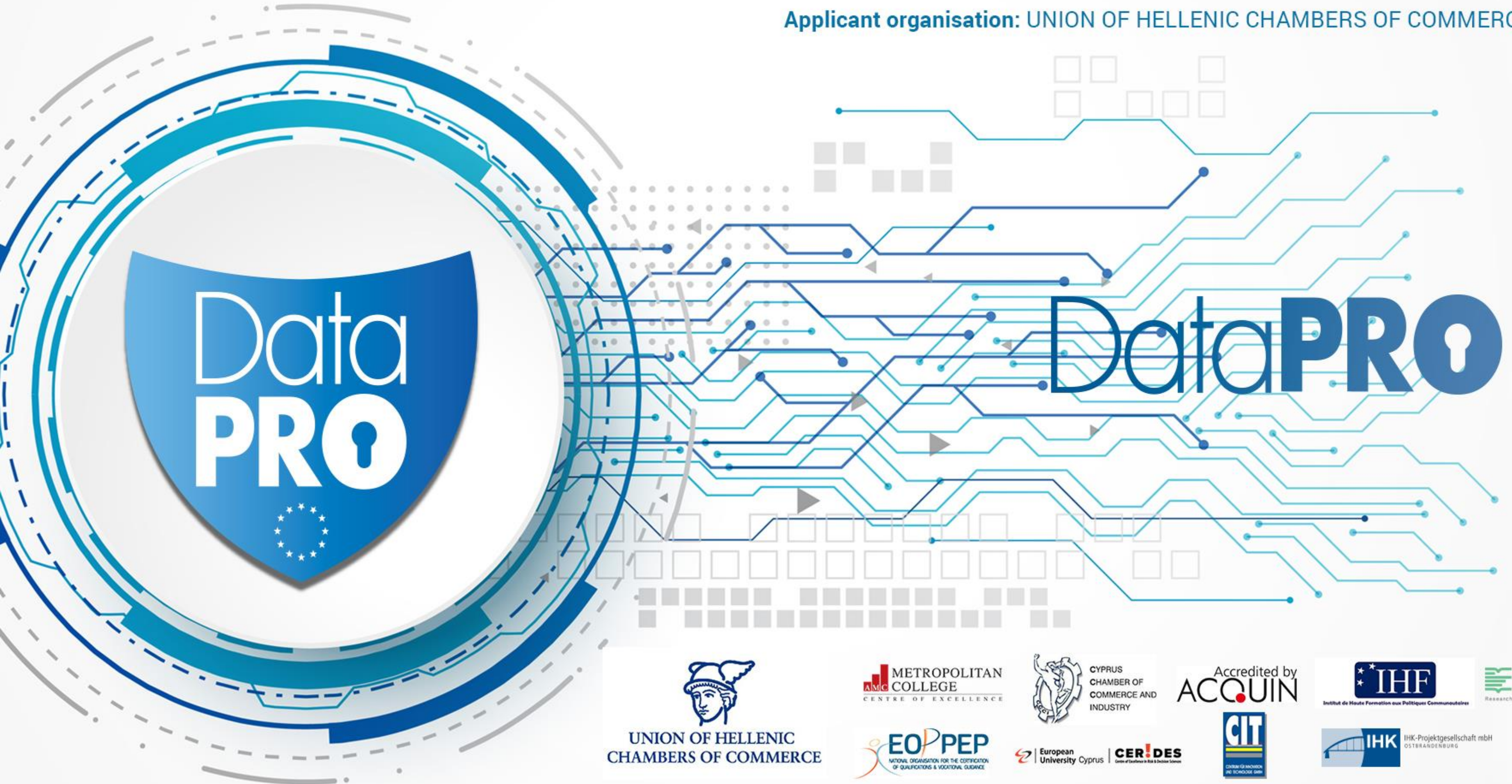


**Proposal number:** 597857-EPP-1-2018-1-EL-EPPKA3-VET-JQ

**Proposal title:** Upgrading the EU Data Protection Sector with new Skills

**Applicant organisation:** UNION OF HELLENIC CHAMBERS OF COMMERCE







European  
University Cyprus



# Η ΚΥΒΕΡΝΟΑΣΦΆΛΕΙΑ ΚΑΙ ΟΙ ΣΥΝΕΠΕΙΕΣ ΤΟΥ COVID-19 ΣΤΗΝ ΨΗΦΙΑΚΗ ΕΠΟΧΗ

**ΔΡ. ΓΙΑΝΝΑ ΔΑΝΙΔΟΥ**

LECTURER IN CYBERSECURITY | COORDINATOR OF THE MASTER IN CYBERSECURITY (CONVENTIONAL AND DISTANCE),  
DEPARTMENT OF COMPUTER SCIENCE & ENGINEERING

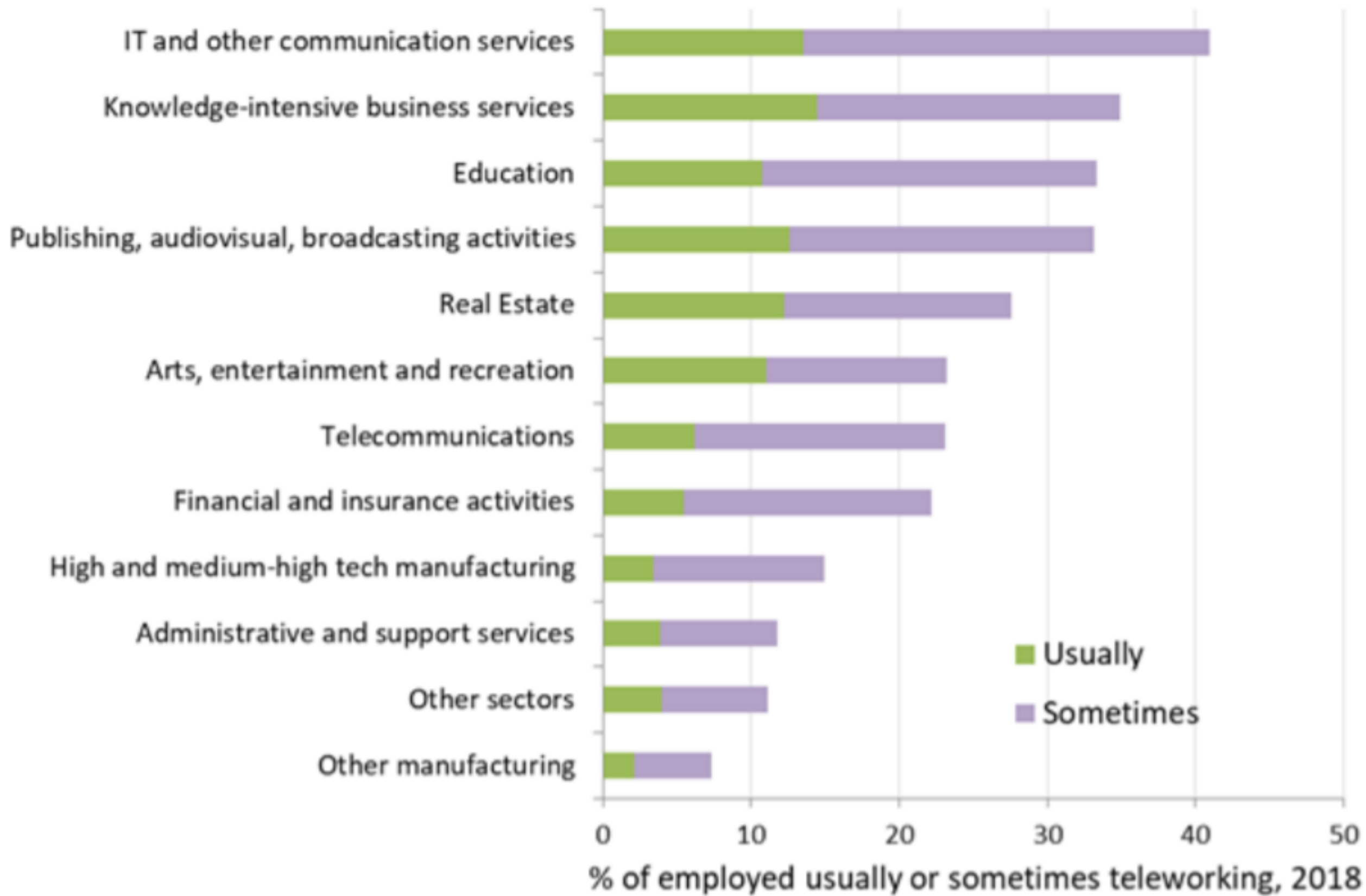
RESEARCH ASSOCIATE, CENTRE OF EXCELLENCE IN RISK AND DECISION SCIENCE (CERIDES)

HEAD OF OPERATIONS, CYBER.CERIDES CYBERSECURITY COMPETENCE CENTER

# Η ΨΗΦΙΟΠΟΙΗΣΗ ΤΗΝ ΕΠΟΧΗ ΤΗΣ ΠΑΝΔΗΜΙΑΣ

---





**Figure 1:** *Prevalence of telework by sector, EU-27*

**Note:** The group “Knowledge-intensive business services” includes the following sectors: Legal and Accounting Activities - Activities of Head Offices; Management Consultancy Activities - Architectural and Engineering Activities; Technical Testing and Analysis - Scientific Research and Development - Advertising and Market Research - Other Professional, Scientific and Technical Activities. The group IC and other communication services include: Computer Programming, Consultancy and Related Activities - Information Service Activities.

**Source:** JRC calculations from ad-hoc extractions of EU-LFS data provided by Eurostat



- 

1 Malware
- 

2 Web-based attacks
- 

3 Phishing
- 

4 Web application attacks
- 

5 Spam

# TOP 15 CYBER THREATS



- 

6 DDoS
- 

7 Identity theft
- 

8 Data breach
- 

9 Insider threat
- 

10 Botnets
- 

11 Physical manipulation, damage, theft and loss
- 

12 Information leakage
- 

13 Ransomware
- 

14 Cyberespionage
- 

15 Cryptojacking

# Great Shocks: The Novel Compound Business Crisis From the COVID-19 Pandemic



**Accelerated Digitalization**  
(Employees, Consumers, Partners, Suppliers)



**Spike in Cyber Threat Activity**  
(Increased Activity Exploiting the Crisis)



**Evolving Government Responses and Mandates**  
(Social Distancing, Shelter in Place, Essential Services Only Operating)



**Supply Chain Disruption**  
(Global Impacts, Including Digital Security)



**Societal Impacts**  
(Stressed, Anxious Employees and Community)

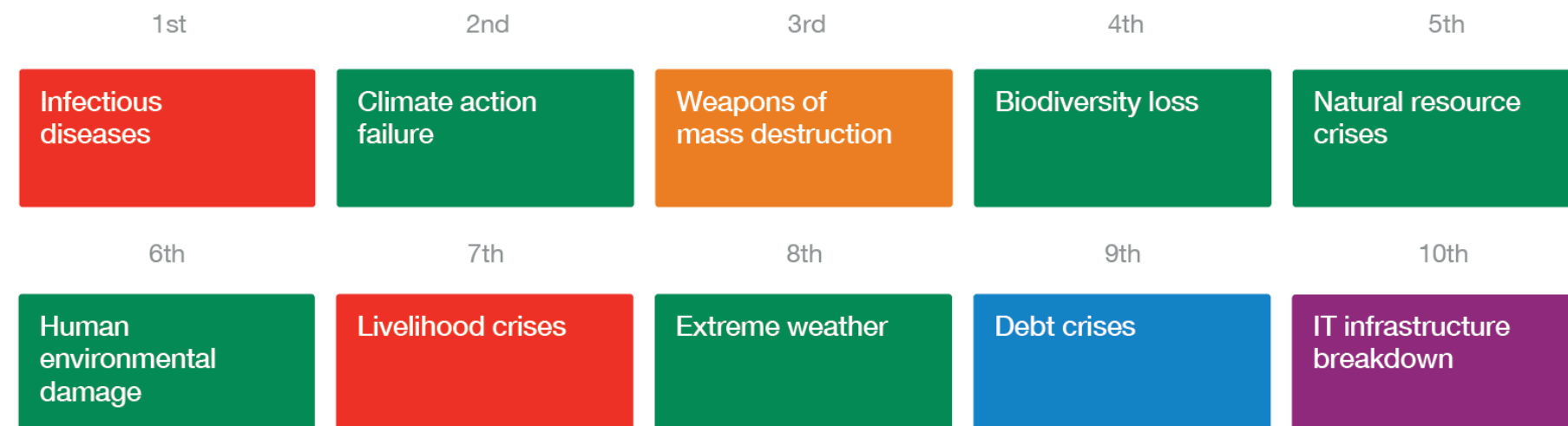
# Global Risks Landscape 2021



## Top Global Risks by Likelihood



## Top Global Risks by Impact



■ Economic ■ Environmental ■ Geopolitical ■ Societal ■ Technological

Source: World Economic Forum Global Risks Report 2021



THANK YOU!

---



The logo features the text "DataPRO" in a blue, sans-serif font. "Data" is in a lighter blue weight, while "PRO" is in a bold, darker blue weight. The text is centered horizontally and overlaid on a complex background of blue circuit traces, nodes, and arrows. In the background, there are also faint grey squares and a grid pattern.

Data**PRO**

The text "Thank you" is written in a simple, blue, sans-serif font. It is centered within a large, circular graphic that has a white-to-light-blue gradient. The circle is surrounded by multiple concentric rings: a solid blue ring, a dashed grey ring, and a solid grey ring. The overall design is clean and modern, with a focus on technology and data.

Thank you